

PHEASANT WALK SECTION EIGHT

A PARCEL OF LAND IN SECTION 36, TOWNSHIP 46 SOUTH, RANGE 42 EAST, PALM BEACH COUNTY, FLORIDA

PREPARED BY: T. B. BIRCHAM IN THE OFFICES OF T. B. BIRCHAM & ASSOCIATES, INC. CONSULTING ENGINEERS-LAND SURVEYORS DEERFIELD BEACH - DICKEY BEACH, FLORIDA COMM. NO. 48334

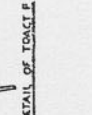
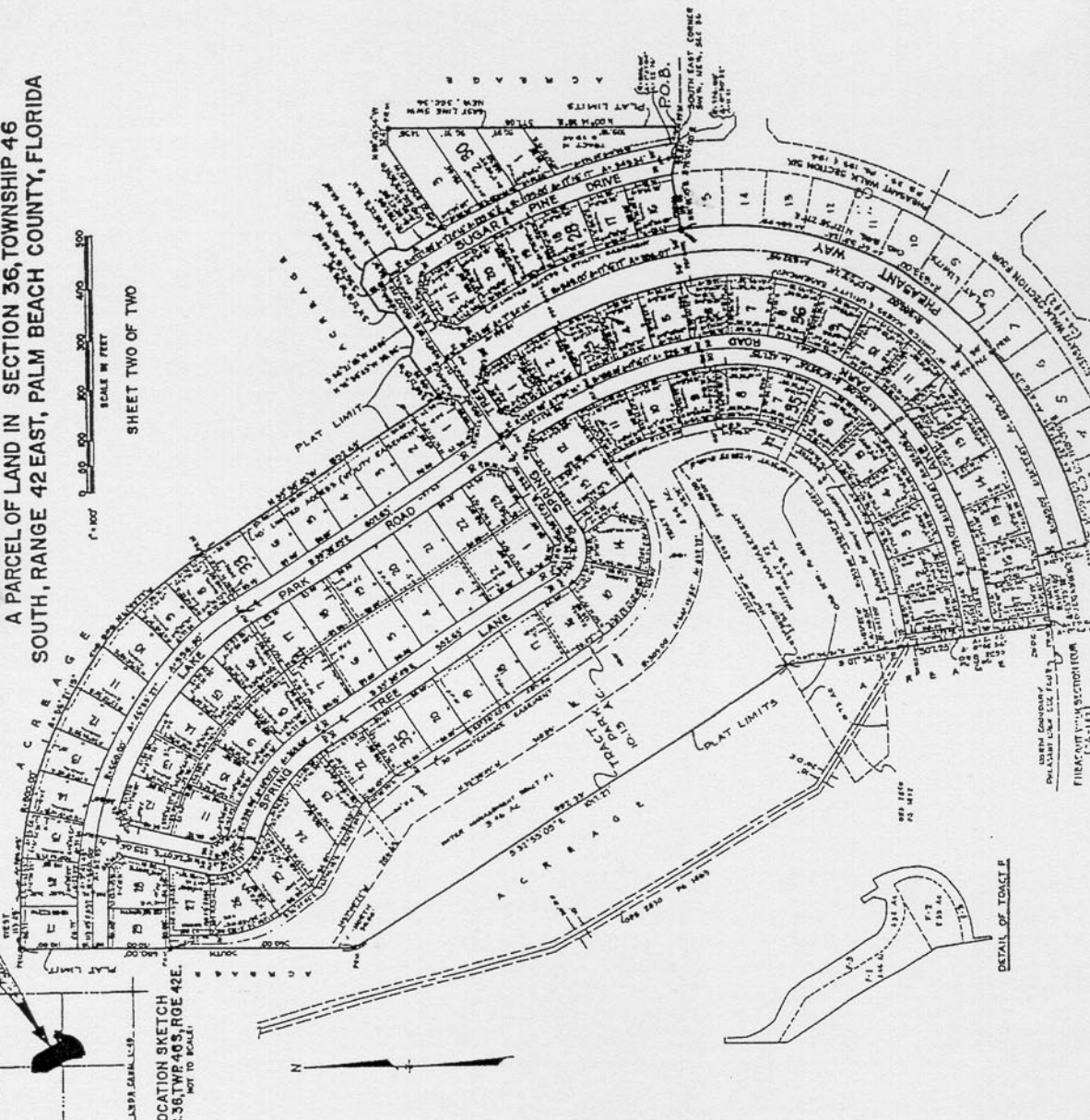
STATE OF FLORIDA
COUNTY OF PALM BEACH
THIS PLAT WAS FILED FOR
RECORD ON _____ DAY OF _____ ON THE
1979 AND DULY RECORDED
IN PLAT BOOK _____ PAGE _____
JOHN B. DORRLE
CLERK OF CIRCUIT COURT
BY: _____

SCALE IN FEET
0 100 200 300 400 500
1" = 100'

SHEET TWO OF TWO

LOCATION SKETCH
SEC. 36, TWP. 46S., RGE. 42E.
NOT TO SCALE

SURVEYOR'S NOTES
1. 0.00' INDICATES PERMANENT REFERENCE MONUMENT
2. 0.00' INDICATES PERMANENT CONTROL POINT
3. U.E. INDICATES UTILITY EASEMENT
4. D.E. INDICATES DRAINAGE EASEMENT
5. A BEARING OF NORTH 42° 32' E. WAS ASSUMED FOR THE EAST LINE OF THE SPIN OF THE NEVA OF SEC. 36.
6. MONUMENTS SHALL BE PLACED ON TREES
7. FRESH FLOOR ELEVATIONS SHALL BE A MINIMUM OF 18 FEET ABOVE CROWN OF ROAD OR A MINIMUM OF 150 HIGHER THAN THE HIGHEST ADJACENT LOT
8. A COMPASS DIAL SHALL BE PLACED ON EACH CORNER EASTMENT LOTS 1 THRU 17 INCL. BLOCK 56 AND LOTS 1 THRU 17 INCL. BLOCK 53.



DEVELOPER
PALM BEACH COUNTY
PLAT NO. 100-111
PHEASANT WALK SECTION EIGHT
(22-111)