

1994

State of Florida
County of Palm Beach
This Plat was Filed for
Record At _____ On The
Day of _____
1998 and duly Recorded
in Plat Book _____ Page _____

John B. Dumble
Clerk of Circuit Court
By _____

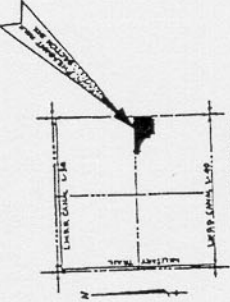
Prepared By: T.D. BUCHANAN in the office of
T.D. BUCHANAN & ASSOCIATES, INC.
Civil and Mechanical Engineers - Land Surveyors
One-Fifth Beach, Okeechobee Beach, Florida
Comm. No. 449312

PHEASANT WALK SECTION SIX

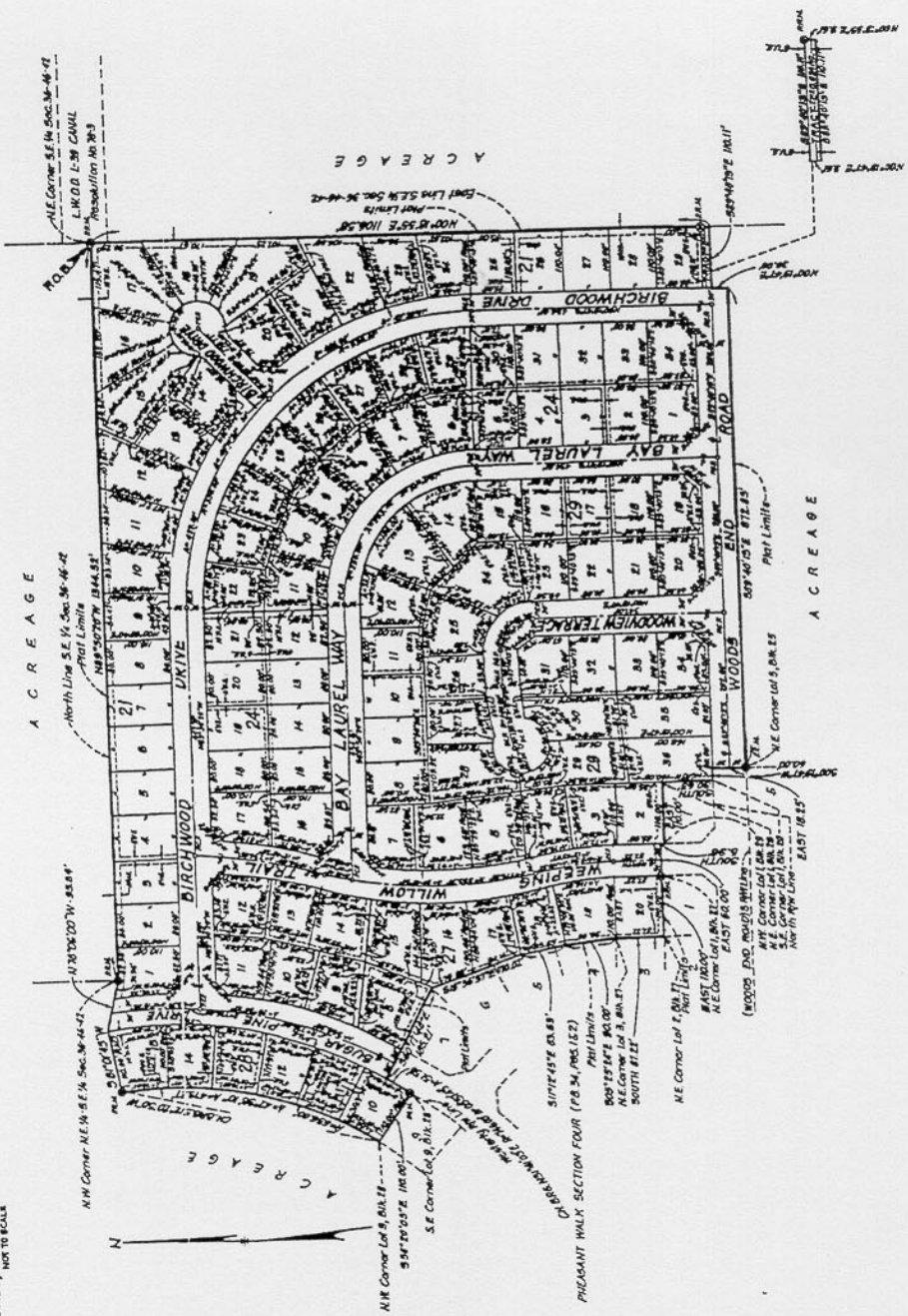
A PARCEL OF LAND IN THE EAST ONE-HALF OF SECTION 36, TOWNSHIP 46
SOUTH, RANGE 42 EAST, PALM BEACH COUNTY, FLORIDA

1"=100'
SCALE IN FEET
0 50 100 150 200 250 300 350 400 450 500 550 600 650 700 750 800 850 900 950 1000

SHEET TWO OF TWO



LOCATION SKETCH
SECTION 36, TWP 46 S, RGE 42 E.
NOT TO SCALE



SURVEYOR'S NOTES

1. These indicate Permanent Reference Monument
2. * = see Indicators Permanent Control Point
3. U.E. Indicates Utility Easement
4. D.C. Indicates Driveway Easement
5. A. Clearing of Non-Improvements for the Road
6. Line of Section may be of construction or from
7. All buildings and other improvements shown on this plat are shown as shown on documents.
8. All other monuments shall be a minimum of 3 inches above ground level and shall be a minimum of 1/2 inch diameter if they are shown on documents.
9. A combined 10 foot wide Utility and Limited Access Easement exists along the rear of Lots 10 through 15, 16, 17, 18, 19 as shown hereon.