

16

STATE OF FLORIDA
COUNTY OF PALM BEACH
PLAT NO. 16-112
FILED AT
DAY OF
1998 AND DELIVERED
IN PLAT BOOK _____ PAGE
JOHN B. DUNN, CLERK OF COURT

BY: _____

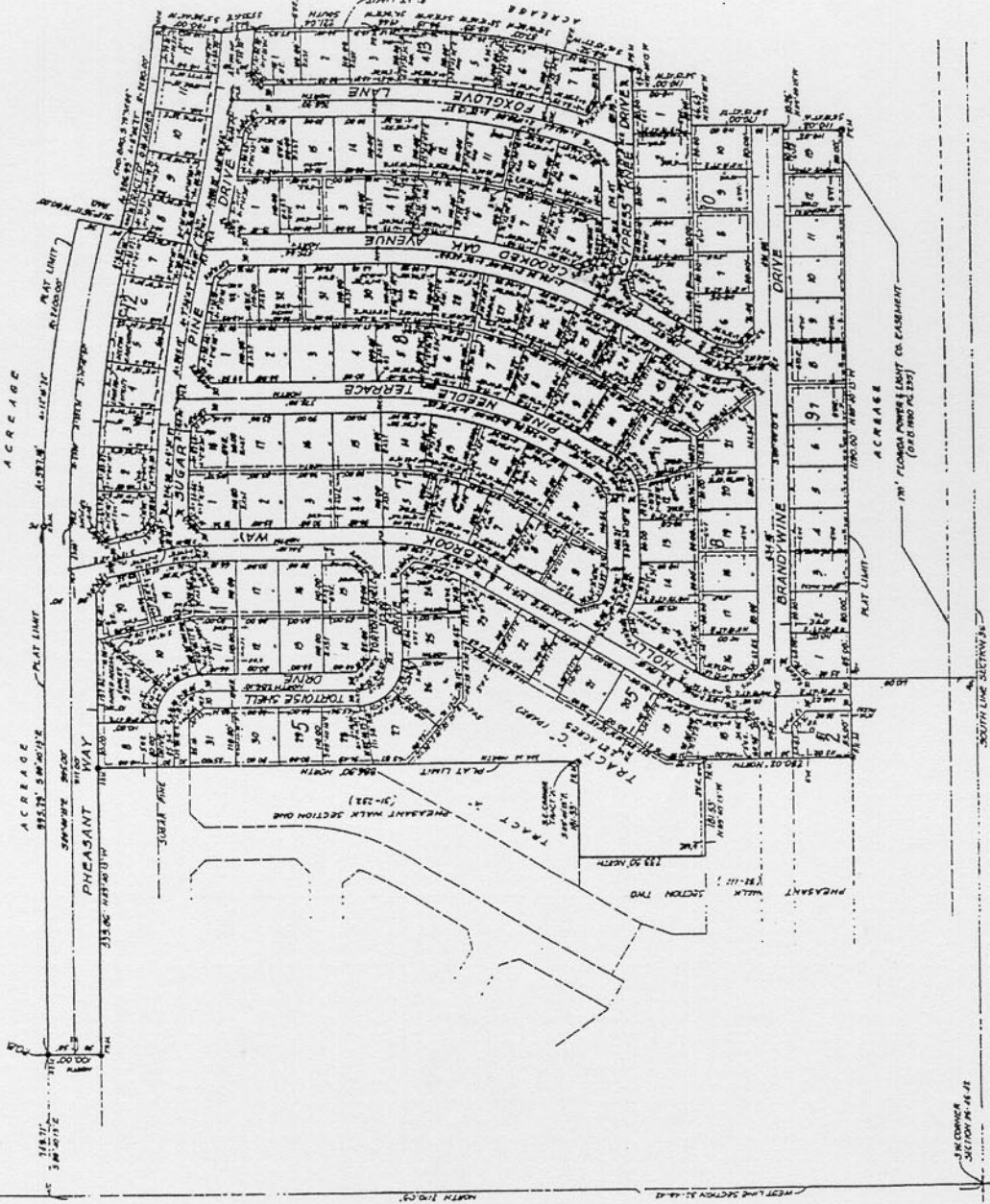
NOTES

1. 000 INDICATES PERMANENT REFERENCE MONUMENT
2. 100 INDICATES PERMANENT CONTROL POINT
3. 101 INDICATES CONTROL POINT
4. 102 INDICATES COLLIMATED CASHEMANT
5. A BEARING OF NORTH WAS ASSUMED FOR THE FIRST LINE OF SECTION 36 AND OF CONSTRUCTION OR TREES SHALL BE PLACED ON EASEMENTS

PREPARED BY: T.D. BUCHANAN IN THE OFFICES OF:
T.D. BUCHANAN & ASSOCIATES, INC.
CONSULTING ENGINEERS - LAND SURVEYORS
OPERATING UNDER DECEMBER 17, 1998
CHALM. NO. 4831

A PORTION OF LAND IN THE SOUTH ONE-HALF
OF SECTION 36, TOWNSHIP 48 SOUTH, RANGE 41 EAST
PALM BEACH COUNTY, FLORIDA

SCALE IN FEET
0 100 200 300 400 500
1" = 100'
DECEMBER 1998
SHEET TWO OF TWO



PHEASANT WALK SECTION THREE

SECTION 36-112